



ANZAC Day Commemorations



"Lest we forget."

Three small words. Three words that carry more meaning than any other and speak volumes to a nation moved. And so we were this ANZAC Day, moved by the reflection and admiration that such a day marks for those fallen in conflicts all over the world. It is to them that we owe our past, present and future, and to them that we pay our deepest respects. It was an opportunity to express these respects on behalf of the school community, an honour and privilege proudly borne by those students and leaders present at the morning service and town march. Whilst the morning was bitterly cold and the march too hot for blazers, we had the opportunity to lay a wreath at the town cenotaph for those fallen and

to make our ongoing remembrance clear in the town march along Bacchus Marsh's main street.

We thank the relevant community groups and the RSL for convening the morning's events, and those parents, teachers and students who took time out on their public holiday and Term Two preparation to mark such an important day.

Ethan Marchington – School Captain



Woodlea student leaders from Years 4, 6 and 8 together with staff, attended the Woodlea Town Centre ANZAC Day Service on Sunday 23 April. It was a moving ceremony which paid tribute to those who made the ultimate sacrifice in defence of our nation. Those present were encouraged to work to preserve and uphold our democratic values for which our Servicemen and women fought so bravely. Lest we forget.

Ms Amanda Maitland-Smith – Head of Senior School : Woodlea

View more images on Schoolbox of the ANZAC Day Community Commemorations and BMG representation [here](#).

Maddingley Campus - Gatehouse Entry

Please note that the Gatehouse Entry will be closed between 10:00am and 3:00pm from Tuesday 2 May to Friday 10 May. If students are required to be signed in or out between these hours, please do so from Main Reception.

Thank you for your understanding.

Mrs Michelle Graham – Executive Assistant to the Principal

School Policies

The School's Student Bullying and Harassment Policy and Enrolment Policy have been reviewed and updated. These documents are available to view on the School Policies page in Schoolbox and on the [School's website](#).

Ms Kerry Brown - Risk, Compliance and Policy Manager

Camps Sports & Excursions Fund (CSEF) – Final Applications Due

This is applicable to families who hold a valid Centrelink pensioner concession or Health care card number (CRN).

If you are yet to return your CSEF form, please ensure this is returned to the Administration Office no later than 19 June 2023 to ensure ample time for your application to be processed. Further information and the CSEF application form can be downloaded from the School's website: <https://www.bmg.vic.edu.au/community/camps-sports-excursions-fund-csef/>

Enquiries and soft copy forms should be directed to Sharon de Vries at accountsrec@bmg.vic.edu.au.

Ms Sharon de Vries - Senior Finance Officer



School Letters – myBMG Parent Portal / Schoolbox

We wish to inform families that filing of school communication sent from Edsmart will no longer be accessible on the myBMG Parent Portal. The main location to access school communication relating to student excursions/camps and class activities will be on Schoolbox under BMG / School Letters.

Mrs Casey Ryder

International Youth Netball Challenge in Singapore

In 2023, Bacchus Marsh Grammar will be offering girls in Years 8 to 10 (in the age category of Under 15 - born on or after the 1st of January 2008) the opportunity to attend the 12th International Youth Netball Challenge in Singapore at the internationally recognised Singapore Sports School. Schools from Malaysia, South Africa, New Zealand, Australia and Singapore will be competing in this prestigious event. The tournament will take place from 20 to 28 November and



the approximate cost will be \$3700 including airfares, accommodation, food, sightseeing opportunities e.g. Universal Studios etc, transfers and uniforms. Any students who are interested in this fantastic opportunity need to attend a meeting at lunchtime on Friday 5 May, Week Two, at 1.00pm in Q1. If you cannot attend, please email Mr Durham or Mr Perks to advise them of your interest.

Mr Andrew Perks - Assistant Principal Optimal Performance Learning

Physical Education, Health and Sport

ICCES Athletics – Monday 1 May at Lakeside Stadium

Congratulations to the all students who have made the ICCES Athletics Team and will now represent BMG. The ICCES Athletics Carnival will take place on Monday 1 May and be held at the Lakeside Stadium at Albert Park. All students will be transported to the venue by bus which will leave Bacchus Marsh Grammar, Maddingley Campus at 9:45am and return to school at approximately 6:15pm. A permission form has been emailed via Edsmart. The full list of competitors can be viewed [here](#).

Muscular Skeletal Screening for BMG Athletes

Students involved in the BMG Elite Sport program and WestVic Scholarship holders will take part in Muscular Skeletal (MSK) screenings next week as part of their pre-hab program. These screens are conducted by PhD Exercise Physiologists from Federation University and are vital in providing the program with information that will enable coaches to accurately design and implement programs in Strength and Conditioning. They provide an insight for coaches to detect current body misalignments or muscle weaknesses/imbbalances that may result in injuries in the future.

Health Workshops - Elephant Education

As part of the Health and Wellbeing curriculum at Bacchus Marsh Grammar, Elephant Education will be conducting a number of sex education and health workshops for our Middle School students during Term 2.

Elephant Education is a leading sexuality education provider to hundreds of schools around Australia. Elephant Ed's workshops are evidence-based, age-appropriate and mapped to State and National curriculum guidelines. Elephant Ed is endorsed by the eSafety Commissioner as a Trusted eSafety Provider. These sessions are designed to empower young people to make informed, positive and safe decisions about sexuality, relationships and growing up. The Elephant Ed student workshops will be conducted in class, across both the Maddingley and Woodlea campuses, and focus on age-appropriate themes.

Maddingley Campus	Woodlea Campus
Monday 15 May Year 5: Puberty / Embracing Change Year 7: Body Safety	Friday 12 May Year 5: Puberty / Embracing Change Year 7: Body Safety
Monday 22 May Year 6: Respectful relationships / Body image Year 8: Social Media / Language & Labelling	Year 6: Respectful relationships / Body image Year 8: Social Media / Language & Labelling

In the lead up to these student sessions, Elephant Ed invites parents to attend an online parent webinar. Please see below for an invitation to a webinar presented by Elephant Ed on Puberty and Embracing Change.

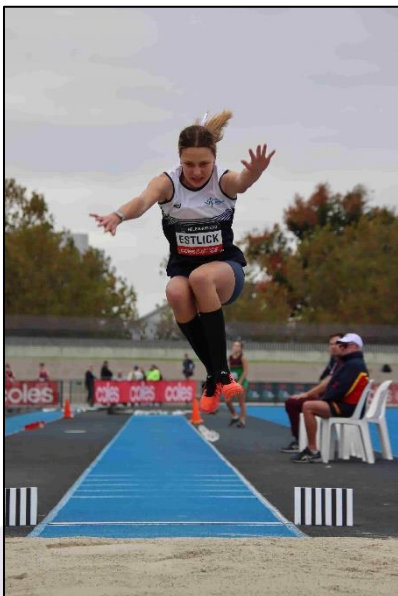
When: Tuesday 9 May, 2023: 7:00 pm – 8:00pm

Topic: Puberty & Embracing Change

In advance of Elephant Ed's workshops with BMG students, this webinar will include discussion around the physical, social and emotional changes associated with puberty, as well as strategies for starting open and effective conversations at home.

You are required to register in advance for this webinar. Please use the link [here](#) to register.

Individual Sporting Achievement



over 2 days, placing 9th in Australia. Mackenzie was also selected to compete in the U15 mixed 4x100m relay, where her team ran 3rd and was awarded the bronze medal.

Congratulations to **Mackenzie Estlick** for her outstanding performance at the Australian Little Athletics Championships over the weekend at Lakeside Stadium. Mackenzie was selected to represent Team Victoria in the U15 heptathlon where she competed in 7 events

Mr Bryce Durham - Head of Faculty: Physical Education and Health

Maddingley Junior School House Cross Country Carnival

The sun was shining and enthusiasm was high during our Junior School House Cross Country Carnival at Staughton Vale on 3 April. Both staff and students had a great time running the 2km course that stretched through the orchards and paddocks of the Staughton Vale farm.

Congratulations to **Hilton** for placing first!

To view winners, Age Group Champions and more photos from the event, please visit [Schoolbox](#).

Mrs Erin Bullen - Junior School Sports : Maddingley Campus



Middle School News

Welcome back to Term Two to all students and families in Middle School. A special welcome to all new students joining the Bacchus Marsh Grammar school community in Term Two. We hope that all families had a restful Easter break.

A reminder to all families to stay abreast of events and school communications via Schoolbox. The Family Engagement Pages are an excellent source of information, so please ensure that you are checking these regularly.

There are many events scheduled for Term Two, so all students should be seeking ways to get involved. Please see your Tutor Teachers for more information about what is happening around the school in Term Two.

We would like to wish all students a successful term. We look forward to working with you and your families.

Mrs Sarah Hunter- Head of Middle School Woodlea & Mr Scott Bayne- Head of Middle School Maddingley

Chess News – Years 1 to 6



Bacchus Marsh Grammar is committed to providing our students with experiences that extend beyond the classroom. The school has had a long-standing relationship with Wyndham Chess Academy and we are proud to offer online or face-to-face chess programs for interested students.

In Term Two, Wyndham Chess Academy is offering several time-slots (all outside of school hours) exclusive to Bacchus Marsh Grammar students. These sessions will be subsidised by the school. Total term fees payable by parents/carers upon enrolment is a reduced cost of \$80 per student.

The following classes are available:

Featherbrook Community Centre

33- 35 Windorah Drive – **Point Cook**

Every Friday from 28 April to 16 June

Start Time : 6:45 pm

Tarneit Community Learning Centre

150 Sunset Views Blvd - **Tarneit**

Every Thursday from 27 April to 15 June

Start Time: 6:45 pm

ONLINE class time

Every Wednesday from 26 April to 14 June

Start Time : 6.00 pm

For full details and enrolment form please visit: <https://chessacademy.com.au/bmg/>

For any technical issues and support please contact Chess Academy directly by phone or email.

Please note that this is a non-compulsory activity. A payment for the course does apply and it is staffed by Wyndham Chess Academy staff only.

Mr David Gorton - Director of Student Engagement

Victorian Premiers' Reading Challenge



The Victorian Premiers' Reading Challenge at Bacchus Marsh Grammar will begin on **Wednesday 26 April** and conclude on **Friday 8 September 2023**.

We invite all students from Year Prep to Year 10 to participate in this exciting challenge. All students who successfully complete the Challenge qualify for the Certificate of Achievement Award from the current Victorian Premier at the end of the year.

ALL Year Prep, Year 1 and Year 2 students will read or 'experience' thirty books in the classroom with their teachers as part of the curriculum. Students from Year 3 to Year 10 are individually challenged to read fifteen books.

This week, passwords will be issued to Year 3 to Year 10 students. Books read can then be entered online by individual students.

The Challenge booklist is available online. We have many listed books available from our libraries which can be searched via our Oliver catalogue through SchoolBox. Please feel free to contact us at school if you have any queries.

Further information and rules for the Reading Challenge are available at <https://www.vic.gov.au/premiers-reading-challenge>.

Mrs Feona West : Teacher-Librarian

Junior School News

Welcome back to Term 2! We trust you had a wonderful holiday with your family.

This term will be busy at both Maddingley and Woodlea campuses with the Semester One reporting process getting underway.

As in Term 1, teachers will continue assessing students in multiple ways, enabling them to form a judgement about each student's achievements and areas of growth this year. Methods of assessment include observational formative assessment, anecdotal notes, summative assessment tasks and a student's performance in class-learning experiences, along with their ability to verbally demonstrate their knowledge and understanding. Teachers will assess students throughout the term to ensure the most accurate and current results are captured.

Early in Term 3, parents will have the opportunity to discuss the student report and their child's results so far this year.

Families can keep up to date with their children's learning by connecting to the Year Level Family Engagement pages on Schoolbox. We encourage you to log in and check out your children's learning.

Please note that, as it is now Term 2, all students must wear their full school uniform - the winter uniform. Please ensure that your child wears the full correct school uniform and that they continue to show discipline and respect when doing so.

Mrs Sally Savic – Head of Junior School : Woodlea & Mrs Lisa Foster – Head of Junior School : Maddingley

RESPECT

DISCIPLINE

CONFIDENCE

AMBITION

LEADERSHIP

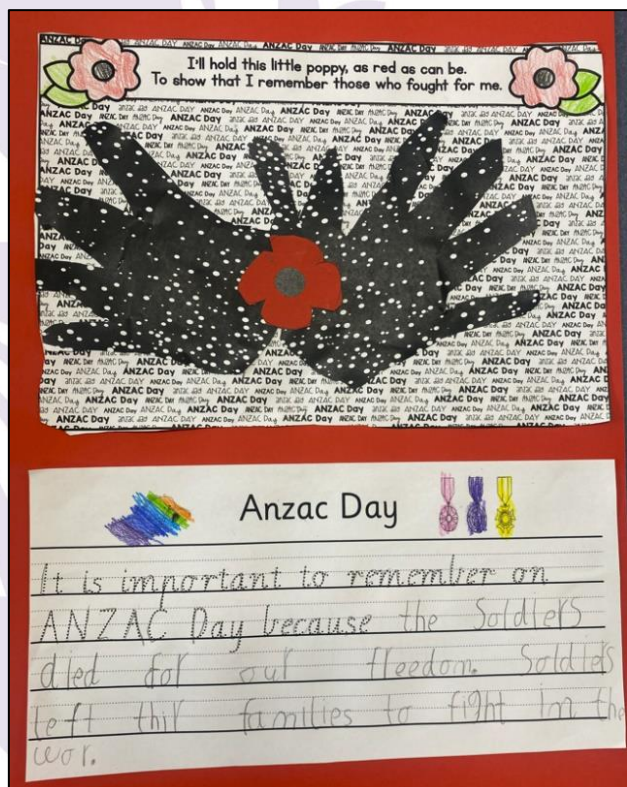
KINDNESS

Woodlea Year 3

Specific	Measurable	Attainable	Relevant	Time-bound
S	M	A	R	T
G	O	A	L	S
What <i>exactly</i> are you trying to achieve?	How will you know when you've achieved it?	Is it genuinely possible to achieve it?	Does it contribute to your agency's revenue growth?	When do you want to achieve this by?

reach their goals. The Year 3 teachers look forward to supporting students as they work towards achieving their SMART goals this term.

Year 3 Team - Woodlea



Maddingley Year 1

Welcome back to Term 2. The students have settled back in well and we are excited about a great term of learning ahead.

This week, the students learnt about why we commemorate ANZAC Day and its significance. They discussed the importance of the poppy and wrote about why ANZAC Day is important.

- 'It is important to remember ANZAC Day because soldiers had to leave their families when they went to war and some of them died.' Anaika
- 'It is important to remember ANZAC Day to remember the soldiers that went to war.' Addison
- 'It is important to remember ANZAC Day to remember the soldiers that died at war.' Viaan

This term, students will travel back in time to Mesopotamia. Students will learn about how people lived thousands of years ago, the development of civilization, the importance of farming and the development of writing. Students will engage in a variety of reading and writing activities to expand their vocabulary and knowledge. We are excited about a wonderful term of learning.

Year 1 Team - Maddingley

School Photos

School photos are scheduled for the following dates:

Woodlea Campus	Maddingley Campus
1, 2 & 4 May – Woodlea Prep to Year 9 Leadership Photos & BMG Sibling Photos during Periods 1 & 2 ONLY – Thursday 4 May 2023	8 to 12 May – Maddingley Prep Reception to Year 12 Leadership Photos & BMG Sibling Photos during Periods 1 & 2 ONLY – Monday 8 May 2023

School Photos will take place across Woodlea and Maddingley over the next fortnight. View timetables on [Schoolbox](#) under Whole School / School Photos. Please refer to the original Edsmart notification sent on 31 March with information relating to ordering and registering for sibling and leadership photos.

Please note School photos are exempt from the “Exclusion from Multimedia”. If you have any concerns contact Casey Ryder or Cathy Perconte on 5366 4800. All students will be photographed regardless of an order being placed.

Uniform

Students are required to wear their Full (Winter) School uniform. The Full uniform includes blazers, jumpers and ties for students in Years 5 to 12, and jumpers and ties for students in Prep Reception to Year 4. It is expected that students wear their School jumpers for photos. *Refer to Pages 10-13 in the Student Diary.*

Students who have PE/Sport

Maddingley Campus

Junior School (Prep to Year 4)

For Junior School students who have PE on their allocated day for photos, they are to wear their full uniform and pack their runners in their school bag to change into.

Middle (Year 5 to 8) and Senior (Years 9 to 12) School

For Middle and Senior School students who have PE or Sport on their allocated day for photos, they are to wear their full school uniform and bring their PE uniforms, runners and get changed.

Woodlea Campus

Prep to Year 9

For any student who has PE on their allocated day for photos, they are to wear their full uniform and pack their runners in their school bag to change into.

Woodlea Photo Timetable

Woodlea Campus students in Prep to Year 9 have their photos next week. Due to an external school Cross Country event, changes have had to be made to the published timetable sent last term. You can access the updated timetable on [Schoolbox](#).

Please note there are no changes to School Leadership Photos or BMG Sibling Photos. For information relating to registering for BMG Sibling Photos and ordering, please refer to the Edsmart notification sent to families on 31 March 2023.

Mrs Cathy Perconte – Events and Community Development Coordinator

Woodlea Campus - International Week - Monday 1 May - Friday 5 May

As part of Bacchus Marsh Grammar's going commitment to supporting those in need, we have planned some special events during International Week. Profits raised during International Week will be donated to an SRC selected charity.

On Friday 5 May, the School SRC will run an "INTERNATIONAL DRESS DAY" in support of this cause. We are encouraging students to wear sports uniform to school and bring an international costume or clothing in the colours of an International flag that they can wear over their sports uniform. No football jumpers, face painting or coloured hair is permitted. To participate in this day, students are asked to bring a gold coin donation to show their support in raising funds for an SRC selected charity.

The School will host a "SPECIAL FOOD DAY" in support of this cause on Friday 5 May. Students will need to pre-order and purchase items online through Qkr! App. This is now active but will close at **noon on Tuesday 2 May**.

When selecting the menu please ensure you click on WOODLEA SPECIAL FOOD DAY LOTE WEEK. Please ensure you choose the correct class for your order so that your child receives their food.

Travel Conveyance Allowance Applications for Term 2, 2023.

Current families who had a 2022 application do not need to complete a new application as these have been rolled over for 2023, unless their details have changed (ie. Change of address, mode of transport or bank details). If your circumstances have changed, a new application form needs to be submitted as soon as possible.

For those new families who have already applied in 2023, there is nothing further for you to do unless your details have changed.

New families, or families who have not applied and who wish to do so for 2023, should refer to the School's [Business Notice](#) for eligibility and the application process. Application forms are available on the [BMG website](#) and at Reception at both campuses.

Semester One, 2023 payments (which include Terms 1 & 2) for current and approved families, will be processed in July 2023.

For further enquiries relating to Travel Conveyance Allowance please refer to Ms Kerry Brown.

All email queries regarding the Conveyance Allowance should be emailed to: conveyance@bmg.vic.edu.au.

Events Calendar

Dates for upcoming events and excursions can be viewed via the events calendar on the [school's website](#).

Term Dates 2023

Access the term dates on the [school's website](#).

Out of School Hours Care (OSHC) – The Y Ballarat



The Y Ballarat operates the Out of School Hours Care at Bacchus Marsh Grammar.

Enrolments are completed online. For full information please visit the [school's website](#).

Please note that Maddingley OSHC operates out of X6. They will still be accessing the playgrounds and the Gym, therefore families are encouraged to call on arrival to find out where students are located for pick up - 0438 154 842.

Email: chrissie.ashmore@yballarat.org.au Phone: 0490 178 638 W: <https://yballarat.org.au/>

Maddingley:

maddingley.oshc@yballarat.org.au

0438 154 842

Located: South Maddingley Road, Bacchus Marsh.

Woodlea:

woodlea.oshc@yballarat.org.au

0490 490 362

Located: 111 Frontier Avenue, Aintree.

Regular Contacts

Maddingley Campus

South Maddingley Road
Bacchus Marsh VIC 3340

P +61 3 5366 4800

F +61 3 5366 4850

Woodlea Campus

111 Frontier Avenue
Aintree VIC 3336

P +61 3 5366 4900

F +61 3 5366 4950

Woodlea Early Learning Centre

111 Frontier Avenue
Aintree VIC 3336

P +61 3 5366 4999

F +61 3 5366 4850

General School Email: school@bmg.vic.edu.au

School Website: www.bmg.vic.edu.au



Doctrina Vitae

Bacchus Marsh
Grammar

